



Sequim School District

“Inspire and Achieve!”

LEVY FAQ

Why do Washington schools have Bonds and Capital Project Levies?

Washington State does not fund the cost of building new schools, renovating older schools or costly maintenance projects. The state does allow districts to ask local voters for those funds.

Voters approve capital levies and operational levies with a simple majority vote of 50 percent plus 1. Bonds require a supermajority approval of 60 percent.

Why do Washington schools have Educational Programs & Operational Levies?

Washington State does not fully fund the cost of basic education nor does it fund the cost of building new schools, renovating old schools, large maintenance projects or technology needs. As a result, the State allows districts to ask local voters for funds to pay for continued basic education support and other projects that are not sufficiently funded. Voters approve operational and capital project levies with a simple majority vote of 50 percent plus 1. Educational Programs & Operational (EP&O) Levies used to be called Maintenance and Operations (M&O) Levies.

EDUCATIONAL PROGRAMS & OPERATIONS LEVY

This Levy is not a new tax.

It is a renewal of the tax approved by voters in 2013. The current EP&O Levy is set to expire at the end of December 2017.

Why is a renewal of the Educational Programs & Operations Levy needed?

In order to maintain the level of education and services provided to students and families, a renewal of the levy is needed. The estimated tax rate in the proposed 4-year replacement levy is lower than the estimated tax rate in the last levy in part due to an increase in assessed property tax values over the last few years. The levy amount requested each year is fixed and will not change over life of the levy.

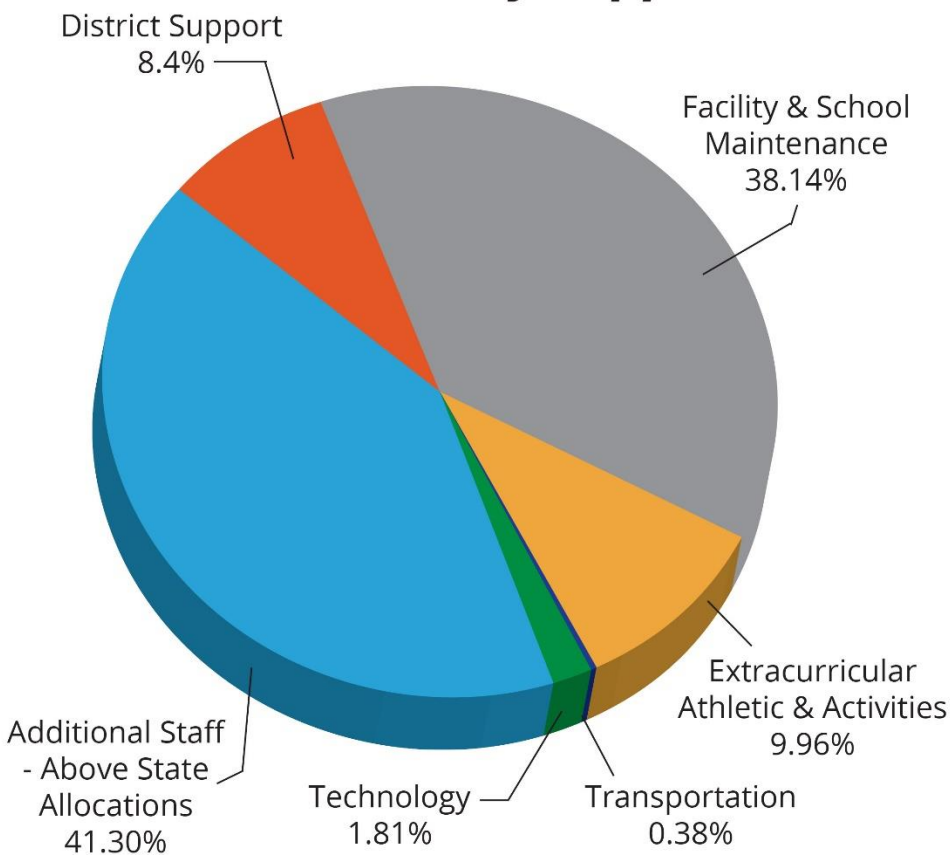
The levies pay for 22% of the school district’s daily operating budget. Approximately 22% of our budget comes from levy money.

What Does the Levy Fund?

In 2013, school district voters approved a four year replacement EP&O Levy which expires at the end of 2017. In order to maintain the level of education and services provided to students and families, a renewal of the levy is needed. The levy was and is used to:

- Additional teaching staff to lower class sizes;
- Maintain professional development for certificated staff;
- Support Curriculum, Instruction and Assessment programs;
- Provide services for special education students;
- Maintain full time nursing services in the district;
- Pay advisor/coaching salaries and transportation costs for extracurricular and athletic programs;
- Maintain and expand the use of technology in the district;
- And provide for facilities maintenance and improvement.

2016-17 Levy Support



The current levy expires December 31, 2017

What will the EP&O Levy cost?

4-Year Educational Programs & Operations Levy	Fixed Amount	Estimated Levy Rate (per \$1,000 of assessed value)
2018 (Year 1)	\$6,324,000	\$1.52
2019 (Year 2)	\$6,524,000	\$1.54
2020 (Year 3)	\$6,724,000	\$1.55
2021 (Year 4)	\$6,924,000	\$1.57

What will happen if this levy doesn't pass?

Without local support, district-wide operations would be significantly affected.

How close is the Sequim School District to the state levy cap?

The District continues to request a levy amount below the allowable levy ceiling set by state statute.

CAPITAL PROJECTS LEVY

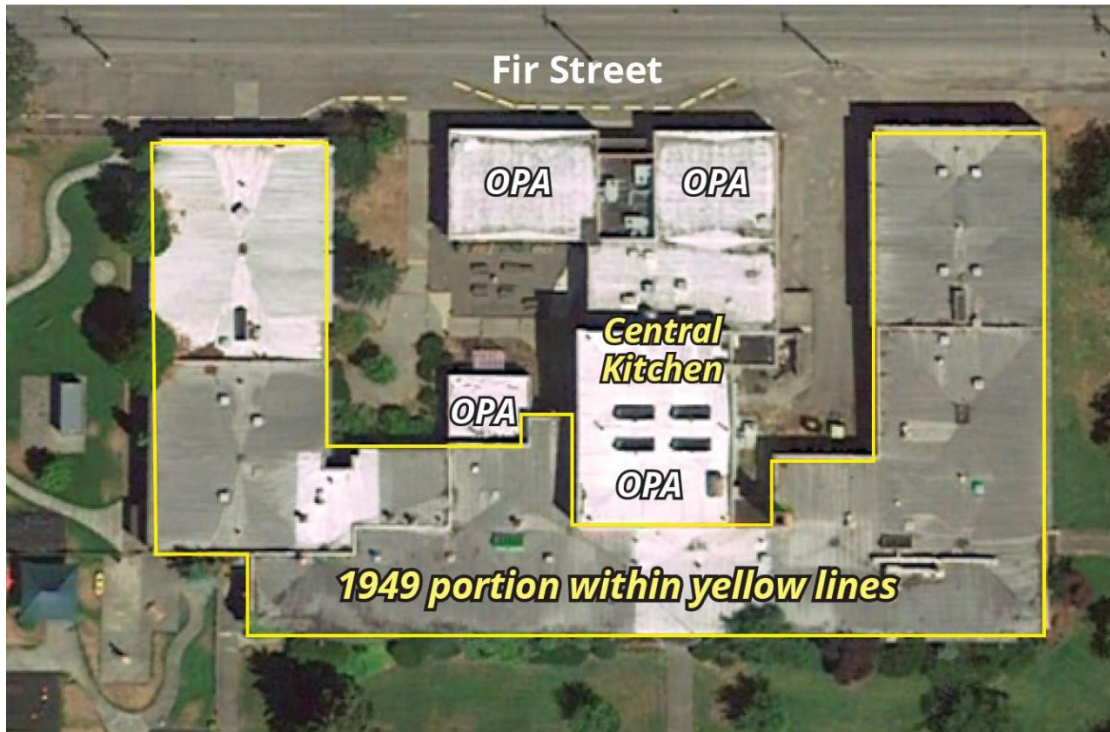
What is a Capital Projects Levy?

A Capital Projects Levy can be as long as six years. Capital project levies are used for larger projects with shorter life spans. For example, the demolition of the 1949 portion of the Community School is a suitable project for a Capital Projects Levy. A Capital Projects Levy doesn't involve debt to investors like a bond does, which makes a capital Projects Levy a less costly way of paying for Capital Projects.

What would this Capital Projects Levy provide?

In 2012, the Sequim School District moved programs out of a portion of the Sequim Community School that was found to be unsafe for students. That part of the building, built in 1949, awaits demolition. Removing this portion allows the District to qualify for \$4.3 million in state matching funds for new school construction.

The other part of the building, built in 1979---home to the District's central kitchen and Olympic Peninsula Academy (OPA), the District's Alternative Learning (ALE) program---would remain and continue to be used for those programs (see photo below).



A Capital Projects Levy would fund demolition of the unused portion of the Community School, allowing the District to qualify for \$4.3 million in state matching funds for new school construction once a construction bond is approved.

The Capital Projects Levy would also help the District upgrade the central kitchen facility by modernizing HVAC, electrical and fire protection systems, installing a double door, and acquiring and installing increased freezer space. The central kitchen facility currently uses World War II-era appliances, and the freezer holds enough space for just two days' worth of food for the District's 2700+ students.

What would the Capital Projects Levy cost?

3-Year Capital Projects Levy	Levy Amount	Estimated Levy Rate (per \$1,000 of assessed value)
2018 (Year 1)	\$681,000	\$0.16
2019 (Year 2)	\$1,549,000	\$0.36
2020 (Year 3)	\$3,525,000	\$0.81

What is the EP&O and Capital Projects Levy combined estimated tax rate?

EP&O and Capital Levy Combined Estimated Tax Rate:

	Estimated EP&O Levy Rate	Estimated Capital Levy Rate	Total Levy Rate per \$1,000
2018 (Year 1)	\$1.52	\$0.16	\$1.68
2019 (Year 2)	\$1.54	\$0.36	\$1.90
2020 (Year 3)	\$1.55	\$0.81	\$2.36

Who is eligible for an exemption from paying this tax?

You may be eligible for an exemption from these taxes. Persons at least 61 years of age or persons under 61 years of age and retired from regular gainful employment due to a disability who earn less than \$35,000 annually may qualify for the Senior Exemption or Disability Exemption. Please contact the Clallam County Assessor's Office at (360)417-2400 for further information.

ELECTION CALENDAR FOR FEBRUARY 14, 2017 SPECIAL ELECTION

Cut-off for Ballot Resolutions – December 16, 2016

Cut-off for Registering to Vote – January 16, 2017

Ballots Mailed – January 25, 2017

Cut-off for Registering to Vote IN PERSON – February 6, 2017

Election Date – February 14, 2017

Election is certified – February 24, 2017

For more information about the EP&O Levy or the Capital Projects Levy, please phone the District office at (360)582-3260.

Levy questions, comments and suggestions may be sent via e-mail to mdashiell@sequim.k12.wa.us, or by U.S. mail to Superintendent, Sequim School District/503 N. Sequim Avenue/Sequim WA 98382

District representatives are available to share information about the February 14, 2017 Levies with your community organization. Please contact Communications Director M. Patsene Dashiell by telephone at (360)582-3264, or e-mail mdashiell@sequim.k12.wa.us to schedule a presentation.